

In the article **Postgraduate Orthopedic Instruction - Imaging**, Case Resolution, published in volume 86, number 1, 2021, pages 130-132, the correct images in Figure 6 are as follows:

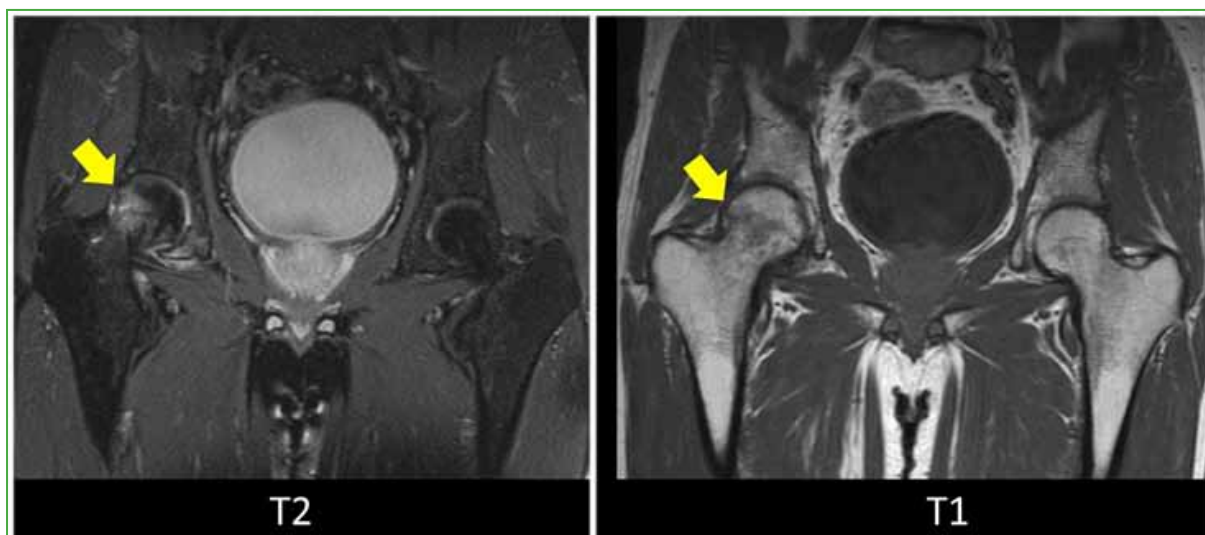


Figure 6. MRI T1-weighted and T2-weighted coronal sequences. The peripheral subchondral area of the right femoral head shows high signal intensity in T2-weighted sequences, suggesting bone edema compatible with insufficiency fracture in a patient with osteopenia.